



LENOVO EQ  
TECHNOLOGY



EXTRA BASS &  
PURE MUSIC



BIX & VOICE  
CONTROL



QUALCOMM APTX



BT 5.0 WITH  
10M DISTANCE



IPX5  
DREAR & WATER  
RESISTANT



8H PLAYING TIME  
200H STAND BY



DUAL  
MICROPHONE



PERFECT  
FIT GEL TIPS

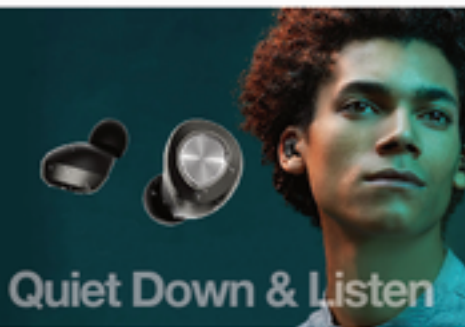


Product code:  
HT10Pro-BK (Black)  
HT10-Pro-RO (Red)

EAN code:  
6970648211206  
6970648212437

Retail Box:  
Retail Box = 1 unit  
Dimensions 100x100x40mm  
Weight 6.057g

Master Carton:  
Master Carton = 100 units  
Dimension 330x330x180mm  
Weight 15kg



### The Lenovo HT10-Pro In-Ear True Wireless Earbuds are our most advanced Earbuds yet!

Together, the buds and case offer up to 48 hours of playtime combining Lenovo EQ Technology and supporting Qualcomm aptX audio. The HT10-Pro delivers HD sound quality and minimal audio lag for all your entertainment, no matter where you are or what you are doing.

Adjust the sound to your preference with EQ tech jumping from Extra Bass or Pure Music to match your mood. Sleek and easy-fit design includes three different size gel-tips for comfortable use all-day.



#### PRODUCT SPECIFICATION:

Model:	HT10 Pro
Chipset:	Qualcomm QCC3020
Bluetooth-Features:	A2DP, HFP, HSP, AuRCP, APTX
Bluetooth:	Bluetooth Version 5.0
Range:	10 metres
Voice control:	Bix Voice Function
Music time:	8 hours
Talk time:	8.5 hours
Standby time:	200 hours
Charging time:	≤ 2 hours
Cell Type:	Lithium Polymer
Battery case:	800mAh 3.7V
Battery earbuds:	2 x 60mAh
Aux Port:	3.5mm

Lenovo